

WEST ROSS DEER MANAGEMENT GROUP

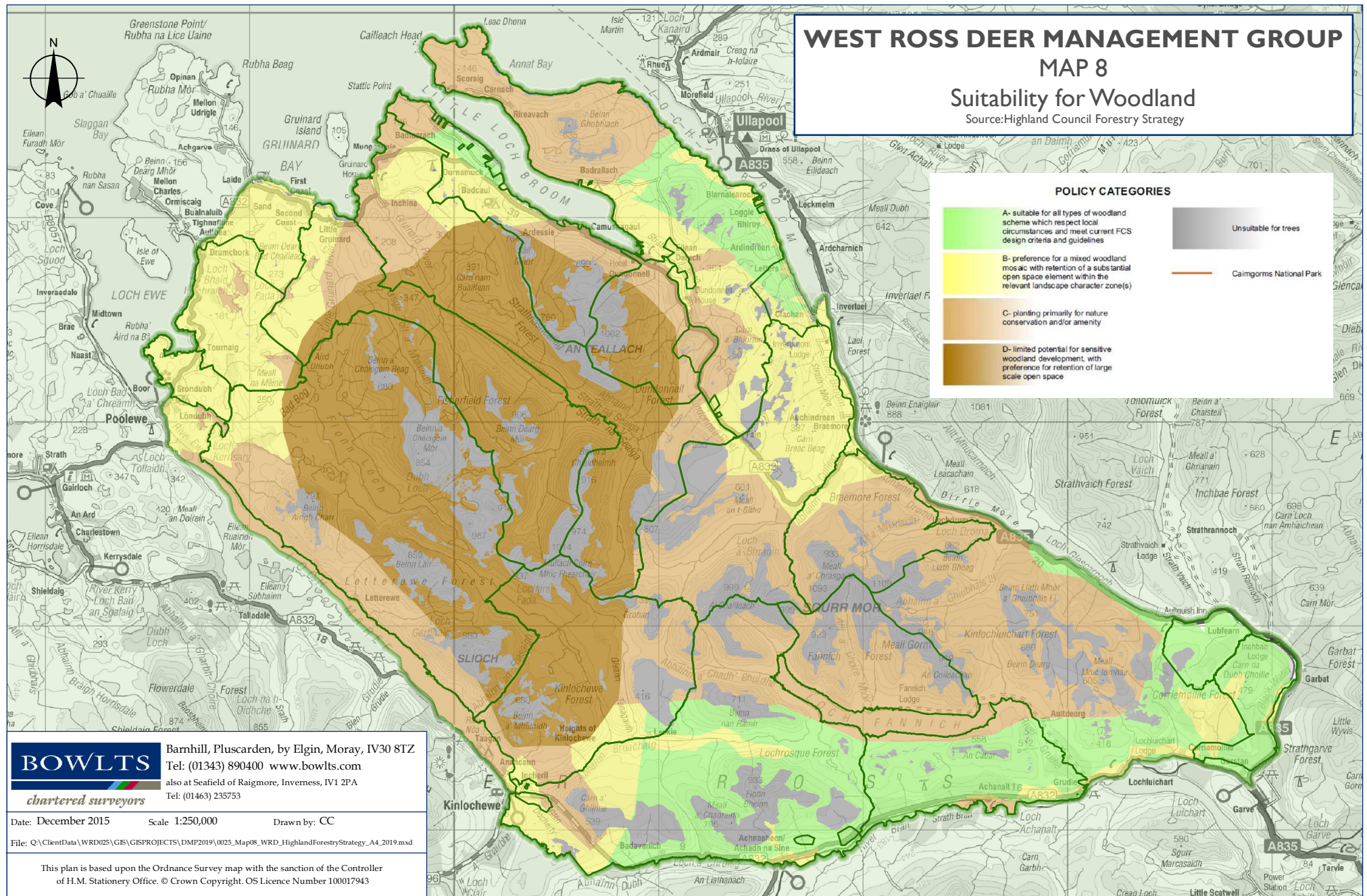
MAP 8

Suitability for Woodland

Source: Highland Council Forestry Strategy

POLICY CATEGORIES

	A- suitable for all types of woodland scheme which respect local circumstances and meet current FCS design criteria and guidelines		Unsuitable for trees
	B- preference for a mixed woodland mosaic with retention of a substantial open space element within the relevant landscape character zone(s)		Caimgorms National Park
	C- planting primarily for nature conservation and/or amenity		
	D- limited potential for sensitive woodland development, with preference for retention of large scale open space		



BOWLTS chartered surveyors
 Barmhill, Pluscarden, by Elgin, Moray, IV30 8TZ
 Tel: (01343) 890400 www.bowlts.com
 also at Seafield of Raigmore, Inverness, IV1 2PA
 Tel: (01463) 235753

Date: December 2015 Scale 1:250,000 Drawn by: CC
 File: Q:\ClientData\WRD025\GIS\PROJECTS\DMP2019\0025_Map08_WRD_HighlandForestryStrategy_A4_2019.mxd

This plan is based upon the Ordnance Survey map with the sanction of the Controller of H.M. Stationery Office. © Crown Copyright. OS Licence Number 100017943