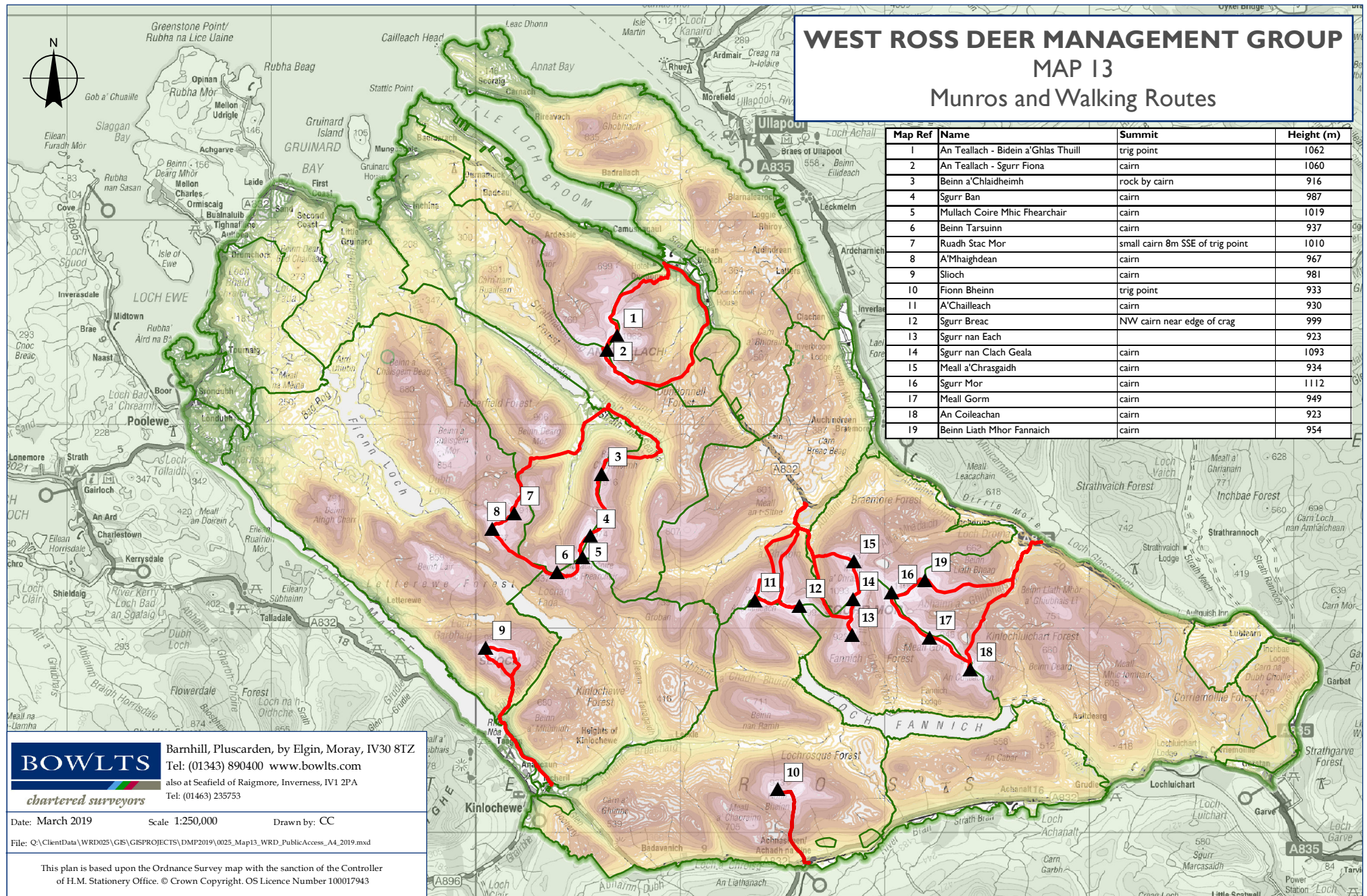


WEST ROSS DEER MANAGEMENT GROUP

MAP 13

Munros and Walking Routes

Map Ref	Name	Summit	Height (m)
1	An Teallach - Bidein a'Ghlas Thuill	trig point	1062
2	An Teallach - Sgurr Fiona	cairn	1060
3	Beinn a'Chlaidheimh	rock by cairn	916
4	Sgurr Ban	cairn	987
5	Mullach Coire Mhic Fhearchair	cairn	1019
6	Beinn Tarsuinn	cairn	937
7	Ruadh Stac Mor	small cairn 8m SSE of trig point	1010
8	A'Mhaighdean	cairn	967
9	Slioch	cairn	981
10	Fionn Bheinn	trig point	933
11	A'Chailleach	cairn	930
12	Sgurr Breac	NW cairn near edge of crag	999
13	Sgurr nan Each		923
14	Sgurr nan Clach Geala	cairn	1093
15	Meall a'Chrasgaidh	cairn	934
16	Sgurr Mor	cairn	1112
17	Meall Gorm	cairn	949
18	An Coileachan	cairn	923
19	Beinn Liath Mhor Fannaich	cairn	954



BOWLTS chartered surveyors
 Barmhill, Pluscarden, by Elgin, Moray, IV30 8TZ
 Tel: (01343) 890400 www.bowlts.com
 also at Seafield of Raigmore, Inverness, IV1 2PA
 Tel: (01463) 235753

Date: March 2019 Scale 1:250,000 Drawn by: CC
 File: Q:\ClientData\WRD025\GIS\PROJECTS\DMP2019\0025_Map13_WRD_PublicAccess_A4_2019.mxd

This plan is based upon the Ordnance Survey map with the sanction of the Controller of H.M. Stationery Office. © Crown Copyright. OS Licence Number 100017943